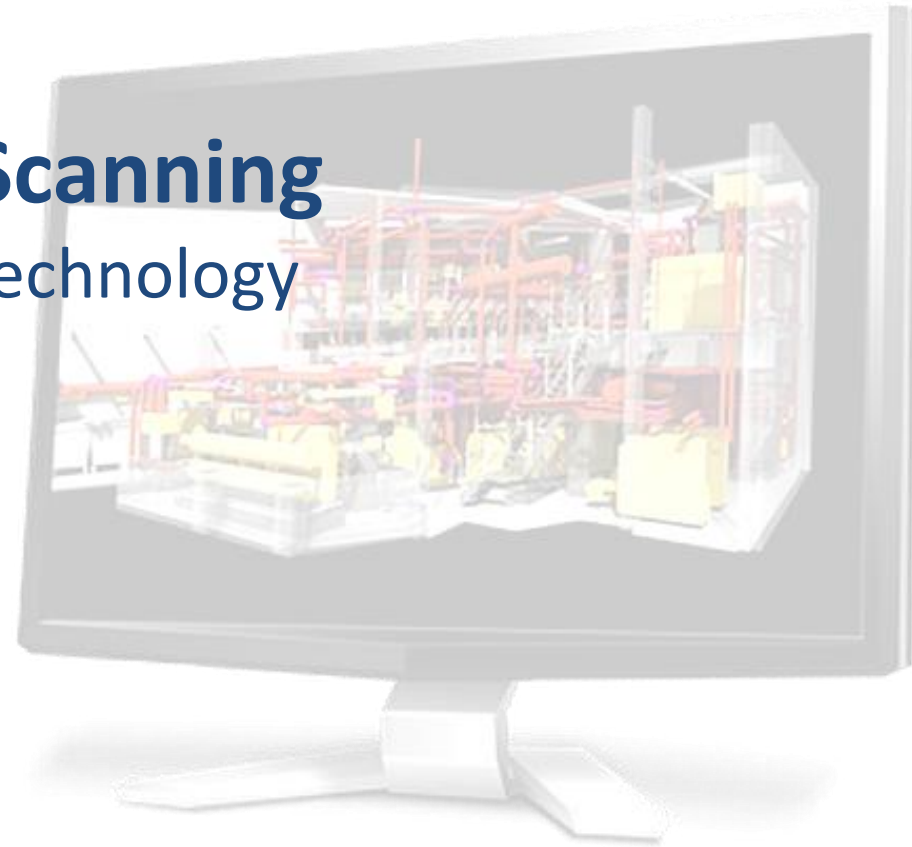
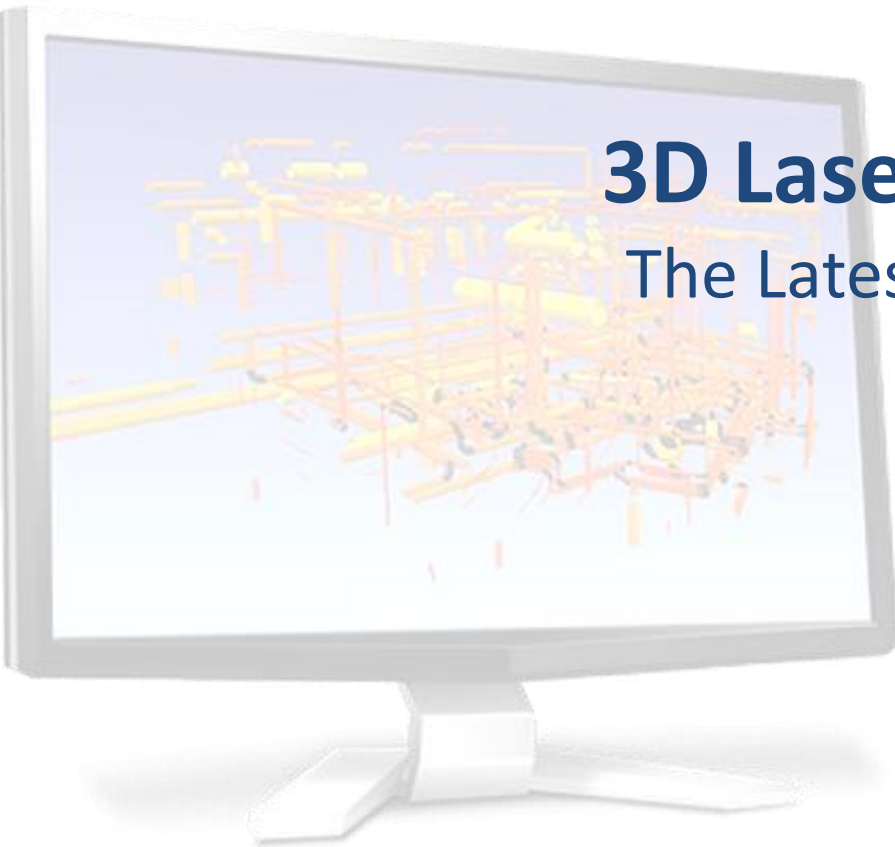


3D Laser Scanning

The Latest Technology



3D Laser Scanning The Latest Technology

Digital Surveys provide a comprehensive data capture service using the latest 3D laser scanning to carry out point cloud surveys. This allows us to virtually map everything from large scale plants down to very small industrial components.

Active8 Robots utilise a range of 3D scanners each with different capabilities, ranges, speed durability and accuracies. When an item or site is scanned, a very accurate 3D data set known as a point cloud is generated.

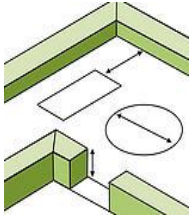
Why you should use this service.....

- ✓ We offer very fast data capture
- ✓ Our work is very accurate (sub mm)
- ✓ We ensure minimum disruption
- ✓ Our scanning is suitable for hazardous environments
- ✓ There will be a reduced need for site re-visits
- ✓ You can see stunning visual results in 3D



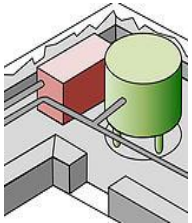
What use is this data?

We've developed a variety of outputs for the Point Cloud Scan



Basic Outputs

- 'As built' basic layout in **Autocad** or similar
- 'As built' layout including all pipe runs
- 3D buildings walls in **Autocad** exportable to **REVIT**
- Photographic 3D 'walk-throughs' with instant measurement



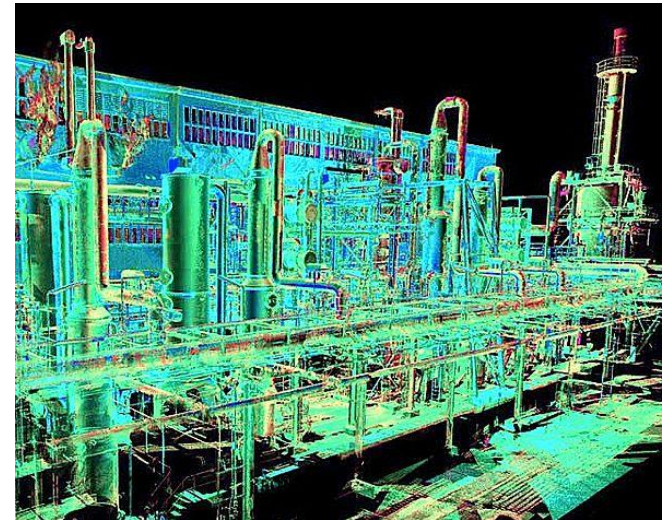
Advanced Outputs

- 3D structural steelwork in **Autocad** for analysis
- 'Shrink-wrap' 3D modelling direct from Point Cloud
- 3D pipework modelling with auto export to Plant 3D or P&ID's
- Parametric 3D models in **dwg, dwf, stp, sat, egs** etc



Downstream Outputs

- Intelligent **P&ID's**
- New pipework **ISOGENS**
- Training / Plant investigation
- Reverse engineering



What are the costs?

Active8 Robots use all their own 3D scanners rather than hiring, which is relatively common amongst our competitors. This has enabled us to develop our own unique scanning/design workflows. This also gives us flexibility to not only serve our clients who require large extensive scans but also carry out smaller jobs where often the cost to hire a scanner can be prohibitive.

- £1,500 +VAT per day scanning
- £600 +VAT per day post processing

